

ZURN Z6918-ADM SERIES
SENSOR OPERATED LAVATORY FAUCETS

installation & maintainance guide

ZURN Z6918-ADM
(BATTERY INTERNAL TO SPOUT)



ZURN Z6918-ADM-EB
(BATTERY EXTERNAL TO SPOUT)



ZURN Z6918E-ADM
(EXTERNAL POWER CONVERTER)



Index

- 3** TECHNICAL DATA
- 4-5** PACK CONTENTS
 - Zurn Z6918-ADM
 - Zurn Z6918-ADM-EB
 - Zurn Z6918E-ADM
- 6** PRE INSTALLATION INFORMATION
- 7-8** FAUCET INSTALLATION
- 9-10** RANGE ADJUSTMENT
 - Adjusting the sensor range
 - Adjusting the sensor range with a remote control - optional
- 11-12** BATTERY REPLACEMENT INSTRUCTIONS
 - To replace the battery at Zurn Z6918-ADM
 - To replace the battery at Zurn Z6918-ADM-EB
- 13** MAINTENANCE
 - Filter cleaning instructions
 - Care and cleaning of chrome and special finishes
- 13** SPARE PARTS LIST
- 14** TROUBLE-SHOOTING
- 15** LIMITED WARRANTY

T e c h n i c a l d a t a



Zurn Z6918-ADM
Electronic Faucet with mixer
to adjust the temperature

Power Supply:
Operating Water Pressure:
Hot Water temperature:

9V battery or 9V transformer
[100 PSI] max
Max 140° C

P a c k c o n t e n t s

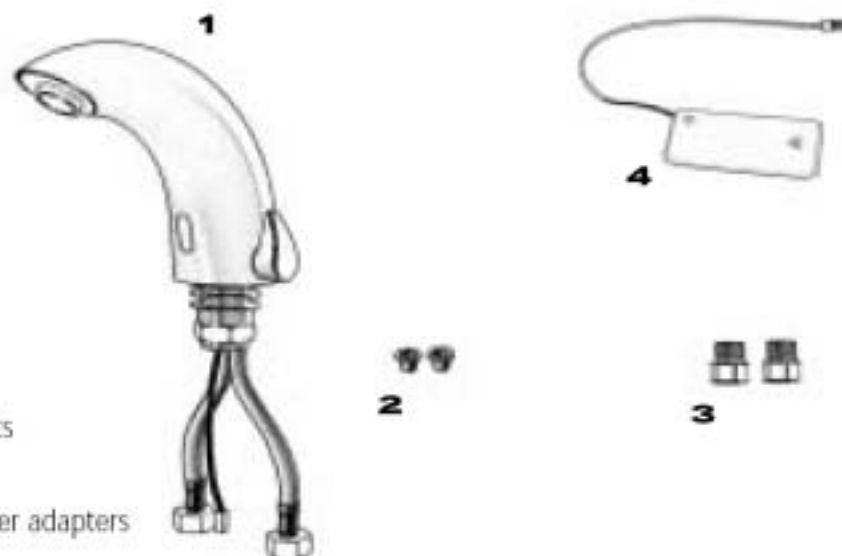
Familiarize yourself with the parts names and confirm that the parts are included.

1. Zurn Z6918-ADM



- 1. 1x Tap and attachments
- 2. 2x Allen key
- 3. 2x Filters
- 4. 2x Back checks and filter adapters

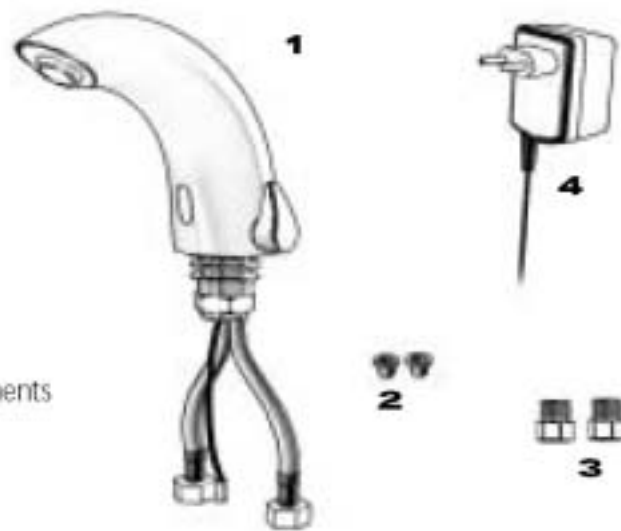
2. Zurn Z6918-ADM-EB



- 1. 1x Tap and attachments
- 2. 2x Filters
- 3. 2x Back checks and filter adapters
- 4. 1x Battery box

P a c k c o n t e n t s

3.Zum Z6918E-ADM



1. 1x Tap and attachments
2. 1x Filters
3. 2x Filter adapters
and Back Checks
4. 1x Transformer

Pre-installation information

Check contents

Separate all parts from the packaging and check each part with the pack contents section.

Pay attention to the different models variations.

Make sure all parts are accounted for before discarding any packaging material.

If any parts are missing, do not attempt to install your Zurn electronic faucet until you obtain the missing parts.

Warnings

Do not install the faucet facing a mirror or any other electronic system operated by an infra-red sensor.

To prevent reflection problems, it is recommended to keep a minimum distance of 6 feet between the faucet and other objects.

Preparation for Installation

Flush water supply lines thoroughly before installing the faucet. Do not allow dirt, Teflon tape or metal particles to enter the faucet.

Shut off water supply.

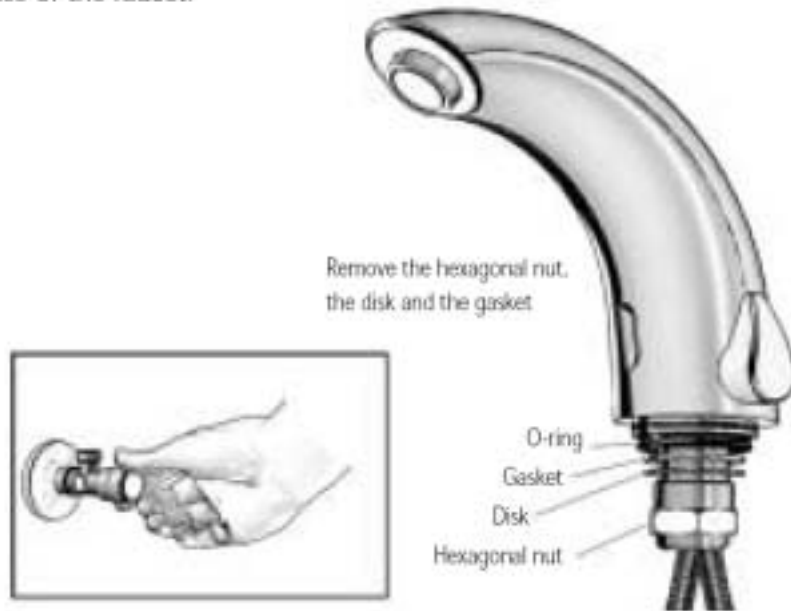
Important

All plumbing is to be installed in accordance with applicable codes and regulations.

F a u c e t i n s t a l l a t i o n

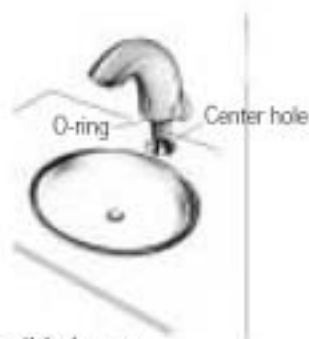
Step 1 - Remove all mounting hardware

1. Shut off water supply and remove the hexagonal nut, the disk and the gasket. Do not remove the O-ring from the base of the faucet.



Step 2 - Installing the faucet

1. Place the faucet with the O-ring into the hole in deck or lavatory. Make sure the O-ring is located between the deck or lavatory and the bottom of the faucet.



2. Slide gasket over flexible hoses.

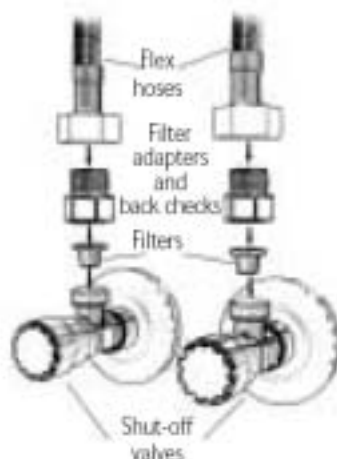


3. Secure the faucet to deck or lavatory with the hexagonal nut and the disk.

F a u c e t i n s t a l l a t i o n

Step 3 - Connecting the water supply

1. Connect the red flexible hose to the hot water supply and the blue flexible hose to the cold water supply.
2. Make sure that the filters and the filter adapters are installed between the flexible hoses and the shut off valve (not supplied).
3. Turn on the central water supply and the shut-off valves.
4. Check for leaks.



Step 4 - Connecting the power source

1. Connect the power source:
 - a. For ZURN Z6918-ADM-EB install the battery's box at the wall under the sink using two sided adhesive foam tape with the cable connection pointing down. Connect the connectors (You can use an optional extension cable in order to assemble the battery box up to 10ft. away from the sink. (See "Spare parts list")
 - b. For ZURN Z6918E-ADM Plug the transformer into the electricity socket and connect the connectors.

2. Remove the sticker from the sensor.
3. Wait a few seconds before activating the faucet.
4. If the range is unsatisfactory, refer to the section entitled "Range adjustment".



Range adjustment

The sensor range is the greatest distance that an object can be away from the sensor to activate the faucet. The sensor is factory preset. If necessary, it may be adjusted as follows:

Adjusting the sensor range:

1. Disconnect the power supply, battery or transformer, from the sensor.

2. Make a short circuit between the (+) and the (-) of the sensor for 5 seconds. You can use a screw driver or another conductor material to make this short circuit.

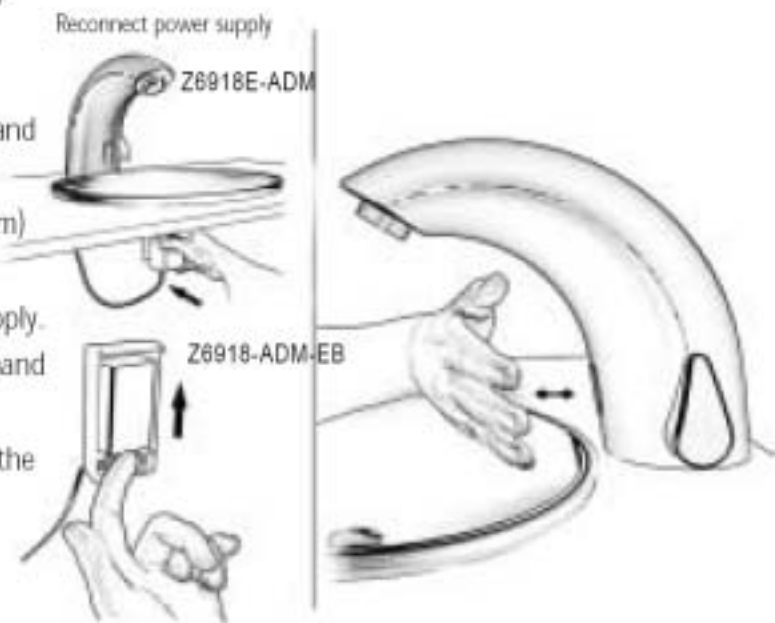
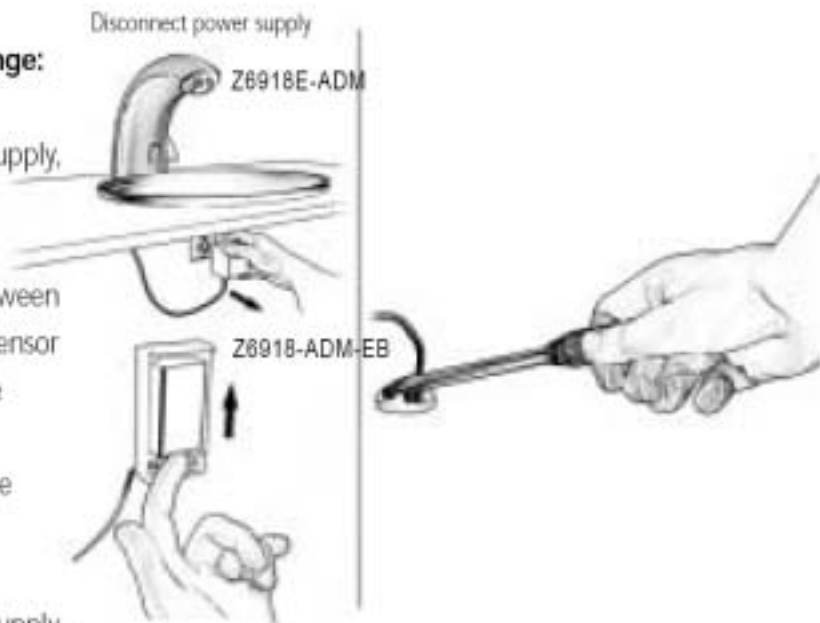
Alternatively, after disconnecting the power supply, activate the sensor three or four times.

3. Do not make a short circuit on the power supply or on the sensor when the power supply is connected to the sensor.

4. Reconnect the power supply to the sensor.

5. To enter into the adjusting mode, you have to put your hand in front of the sensor at a distance of 2" (5cm) to 4" (10cm) within 5 seconds from the reconnection of the power supply.

Note: If you do not put your hand in front of the sensor after connecting the power supply, the sensor will not enter into adjusting mode and the previous setting will return.



Range adjustment

6. When the sensor enters into adjusting mode and your hand is in front of the sensor, a slow flashing of the red light in the sensor eye will occur.

7. You should keep your hand in front of the sensor until the slow flashing changes to quick flashing. At this point you should move your hand to the required distance from the sensor and wait until the red light will stop flashing.

8. When the red light has turned off, the sensor is adjusted to the required distance.

9. Check the distance you have set and if it is not satisfactory, repeat steps 1-7.



Adjusting the sensor with a remote control - optional:

In order to adjust the sensor with a remote control you should hold the remote control straight against the sensor in a distance of about 4" (10cm). Choose the function you want to adjust by pressing once on one of the function buttons. After pressing once on a specific function button, a quick flashing of the red light in front of the sensor will occur. At this stage, you can change the adjustment by pressing the (-) or (+) buttons, every push will increase or decrease one level.

Range: Press + to increase detection range and - to decrease the detection range of the sensor. **The remote control may also be used to adjust:**

Flow Time: Press + to increase the security time and - to decrease it.

Delay In: Function available at remote control 7B only. Changes the time the water will start flowing when the user's hands are within the sensor range. Press + to increase it and - to decrease it.

Delay Out: Function available at remote control 7B only. Changes the time of water flow after the user's hands are removed. Press + to increase it and - to decrease it.

On/Off: This function allows to clean the faucet easily. Press this function button and the faucet will remain off for 1 minute. To cancel this function press the on/off button again.



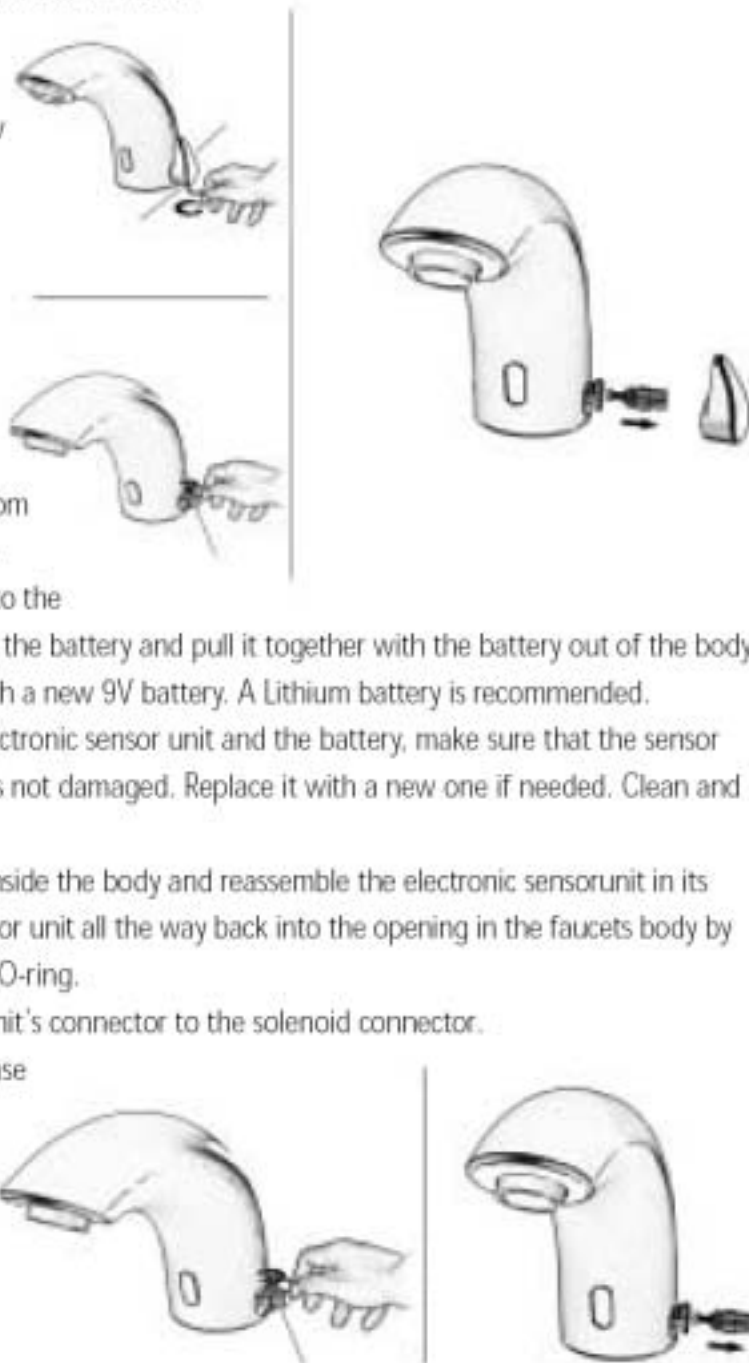
Battery replacement instructions

Battery models only

When the battery weakens, the red indicator light will blink at a constant rate. The battery must be replaced within two weeks.

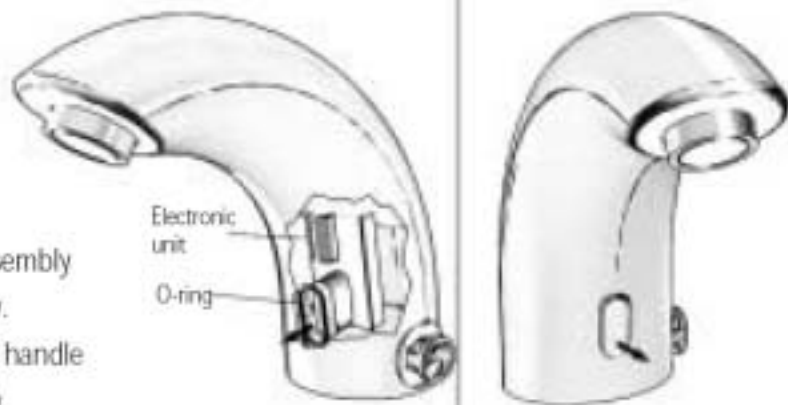
To replace the battery on Zurn Z6918-ADM

1. Turn off the shut off valves.
2. Release the handle-set-screw to remove the mixer handle.
3. Remove allen screw from the axis-assembly. Pull axis assembly off of spout.
4. Release the Allen screw to carefully remove the faucet's body.
5. Disconnect the connector from the electronic unit's connector.
6. Carefully push the sensor into the faucet's body to gain access to the battery and pull it together with the battery out of the body.
7. Replace the used battery with a new 9V battery. A Lithium battery is recommended.
8. Prior to reassembling the electronic sensor unit and the battery, make sure that the sensor o-ring is still in its groove and is not damaged. Replace it with a new one if needed. Clean and lubricate it with silicon grease.
9. Carefully place the battery inside the body and reassemble the electronic sensorunit in its place. Be sure to insert the sensor unit all the way back into the opening in the faucets body by pushing it moderately into the O-ring.
10. Reconnect the electronic unit's connector to the solenoid connector.
11. Place spout assembly on base being careful to align the water passage tube. Secure with allen screw.



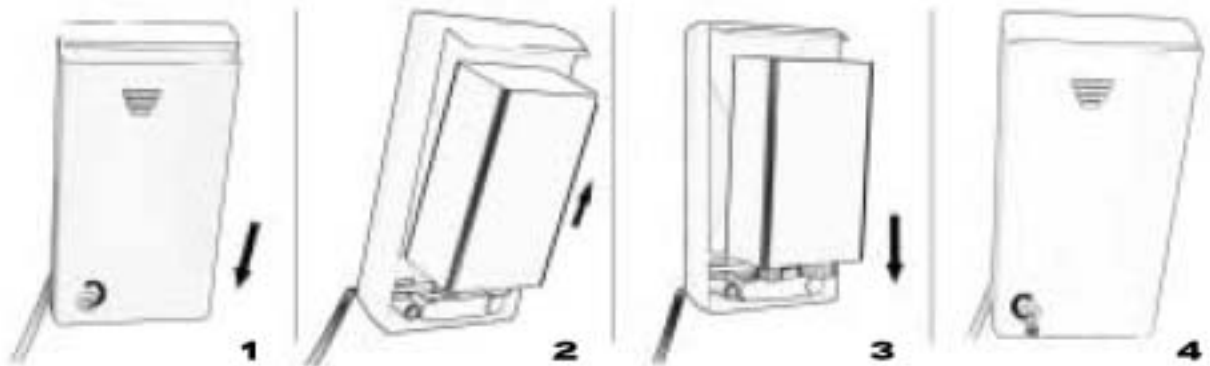
Battery replacement instructions

12. Reassemble the axis-assembly and tighten the Allen screw.
13. Reassemble the mixer's handle and tighten the Allen screw.
14. Turn on the shut off valves.



To replace the battery at Zurn Z6918-ADM-EB:

1. Carefully open the battery's box and remove the old battery.
2. Replace the used battery with a new 9V battery (Lithium battery is recommended).
3. Close the box.



Maintenance / spare parts

Filter cleaning instructions

This mixer is provided with a stainless steel filter preventing foreign particles to enter the lines. If the water flow has decreased, this may be because the filter is clogged. The filter can be cleaned as follows:

1. Shut-off the water shut off valve.
2. Disconnect the red and the blue flexible pipes from the back-checks and filter adapters and then disconnect the back-checks and filter adapters from hot and cold water supplies.
3. Remove the filters and wash them under running water.
4. Reassemble the parts by putting back the filters to the back-check and filter adapters.
5. Reconnect the flexible pipes and restore the incoming water supply. Make sure that the filter adapters and the filters are installed between the flexible pipes and the shut off valves.
6. Make sure that there is no water leakage

Care and cleaning of chrome and special finishes

DO NOT use steel wool or cleansing agents containing alcohol, acid, abrasives, or the like. Use of any prohibited cleaning or maintenance products or substances could damage the surface of the faucet. For surface cleaning of faucet use **ONLY** soap and water, then wipe dry with clean cloth or towel. When cleaning bathroom tile, the faucets should be protected from any splattering of harsh cleansers.

Spare Parts List

- | | |
|---|----------------|
| 1. Electronic unit (sensor) for ZURN Z6918-ADM | P6918-B-L |
| 2. Electronic unit (sensor) for ZURN Z6918-ADM-EB | P6918-B-L-EB |
| 3. Electronic unit (sensor) for ZURN Z6918E-ADM | P6918-B-L-E |
| 4. Solenoid | P6918-100 |
| 5. Filter | P6918-120 |
| 6. Extension cable | P6918-EX |
| 7. Battery box (EB Models only) | P6918-B-BD |
| 8. 9 V Lithium battery | P6918-BAT-LITH |
| 9. 9 V Alkaline battery | P6918-BAT-ALK |
| 10. Transformer (E Models only) | P6918-PC9 |
| 11. Remote control 7 B (Optional) | P6918-RC |
| 12. Wrench for body housing | P6918-W-1 |
| 13. Wrench for ADM Control Knob | P6918-W-2 |

Troubleshooting

Problem	Indicator	Cause	Solution
No water comes out of the tap:	1. Sensor flashes continuously when user's hands are within the sensor's range.	Low battery.	Replace battery.
	2. Red light in the sensor does not flash when user's hands are within the sensor's range.	<ol style="list-style-type: none"> 1. Range is too short. 2. Range is too long. 3. Battery is completely used up. 4. Unit is in "Security Mode"*. 5. Sensor is picking up reflections from mirror or other object. 	<p>Increase the range.</p> <p>Decrease the range.</p> <p>The battery must be replaced.</p> <p>Eliminate cause of reflection.</p>
Water flow from spout does not stop:	3. Red light in the sensor flashes when user's hands are within the sensor's range.	<ol style="list-style-type: none"> 1. Connectors between the electronic unit and solenoid are disconnected. 2. Debris or scale in solenoid. 3. The central orifice in the diaphragm is plugged or the diaphragm is torn. 4. The water supply pressure is higher than 100 PSI. 5. The water supply pressure is under 100 PSI and yet the pressure in the faucet's body is higher. This situation could be caused by a sudden increase in the water supply pressure that the back-check prevents from dropping, even after water supply pressure drops under 100 PSI. 	<p>Connect the electronic unit connectors to the solenoid.</p> <p>Unscrew solenoid, pull out the flange and the spring from the solenoid and clean them.</p> <p>Clean the orifice or replace diaphragm.</p> <p>Reduce the supply water pressure.</p> <p>Shut off water supply and unscrew one of the flexible pipes in order to reduce the pressure that blocked in the product.</p>
	1. Sensor flashes when user's hands are within the sensor's range.	Debris or scale in diaphragm or the diaphragm is torn.	Clean the orifice or replace diaphragm.
	2. Red light in the sensor does not flash when user's hands are within the sensor's range.	<ol style="list-style-type: none"> 1. Sensor is dirty or covered. 2. Sensor is picking up reflections from mirror or another object. 	<p>Clean or eliminate cause of interference.</p> <p>Decrease the range or eliminate cause of reflection.</p>

W a r r a n t y

L I M I T E D W A R R A N T Y

This product is covered by a limited warranty of two years from date of purchase.

During this period, ZURN undertakes, at its option, to repair or replace any faults caused by defective materials or manufacturer defaults that may arise (see Zurn Warranty).

The warranty does not cover faults or damage caused by incorrect installation and/or maintenance, wear and tear, battery, or water composition. This includes, but is not limited to the following:

- Incorrect installation, inversions of supply pipes.
- Pressures or temperatures exceeding recommended limits.
- Improper manipulation, tampering, bad or lapsed maintenance.
- Foreign bodies, dirt or scale introduced by the water supply.



Zurn Industries, Inc.
Commercial Brass Operation
5900 Elwin Buchanan Drive
Sanford, NC 27330
Phone: 1-800-997-3876
Fax: 1-919-775-3541
www.zurn.com

